

**INSTRUMENT
APPROACH
CHART - ICAO**

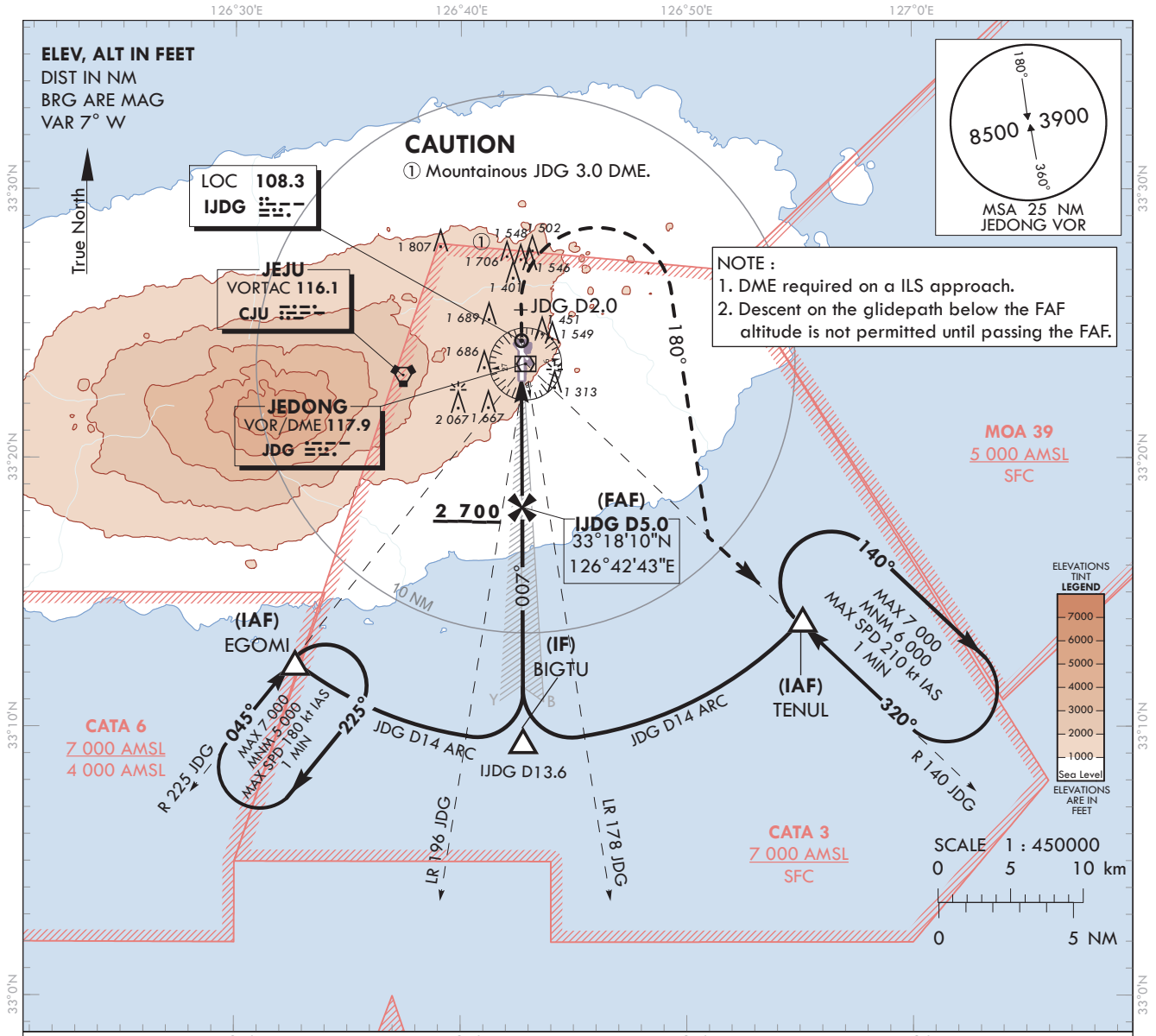
AERODROME ELEV 1 174 ft
HEIGHTS RELATED TO
THR RWY 01 - ELEV 1 102 ft

JEJU	APP	121.2
		124.05
JEONGSEOK	TWR	124.35

JEJU/Jeongseok(RKPD)

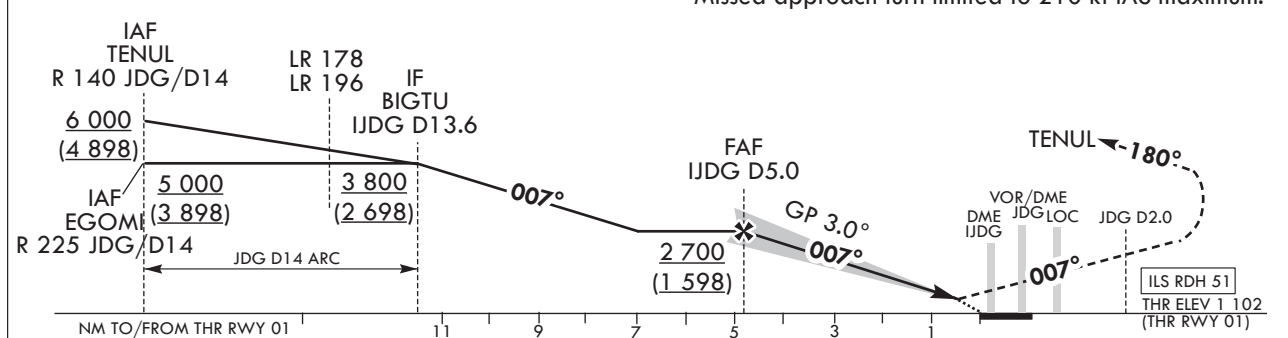
ILS RWY 01

Note : Approach under ICAO Flight Procedures.



TRANSITION ALT 14 000
TRANSITION LVL FL 140

MISSED APPROACH
Climb straight ahead until JDG D2.0,
turn right HDG180° to intercept R 140 JDG,
then proceed to TENUL 6 000 ft and hold.
Missed approach turn limited to 210 kt IAS maximum.



CATEGORY		DA(H)	A	B	C	D							
CAT-I (4.0%)	FULL	1 302(200)	RVR 750 m, VIS 800 m				Rate of descent (FAF - THR)	Knots	60	90	120	150	180
	ALS INOP		1 200 m										
CAT-I (2.5%)	FULL	1 482(380)	1 500 m				V/V fpm	323	485	646	808	970	
	ALS INOP		2 000 m										

* Circling Not authorized.

Change : Page control.

JEJU/Jeongseok(RKPD)
ILS RWY 01

AERONAUTICAL DATA TABULATION

ILS approach to RWY 01 from TENUL, EGOMI		
Fix/point		Coordinates
TENUL(IAF)	R 140 JDG/14.00 NM	33°14'01.6"N 126°55'08.7"E
EGOMI(IAF)	R 225 JDG/14.00 NM	33°12'24.7"N 126°32'40.7"E
BIGTU(IF)	BRG 187.12°/13.60 NM IJDG	33°09'30.3"N 126°42'46.3"E
D5.0 IJDG (FAF)	BRG 187.12°/4.95 NM IJDG	33°18'10.2"N 126°42'43.3"E
THR RWY01		33°22'58.36"N 126°42'41.71"E
IJDG LOC		33°24'22.7"N 126°42'41.2"E
IJDG DME		33°23'07.8"N 126°42'46.5"E
D2.0 JDG(MATF)	2.00 NM JDG	33°25'31.7"N 126°42'40.8"E
TENUL(MAHF)	R 140 JDG/14.00NM	33°14'01.6"N 126°55'08.7"E

**INSTRUMENT
APPROACH
CHART - ICAO**

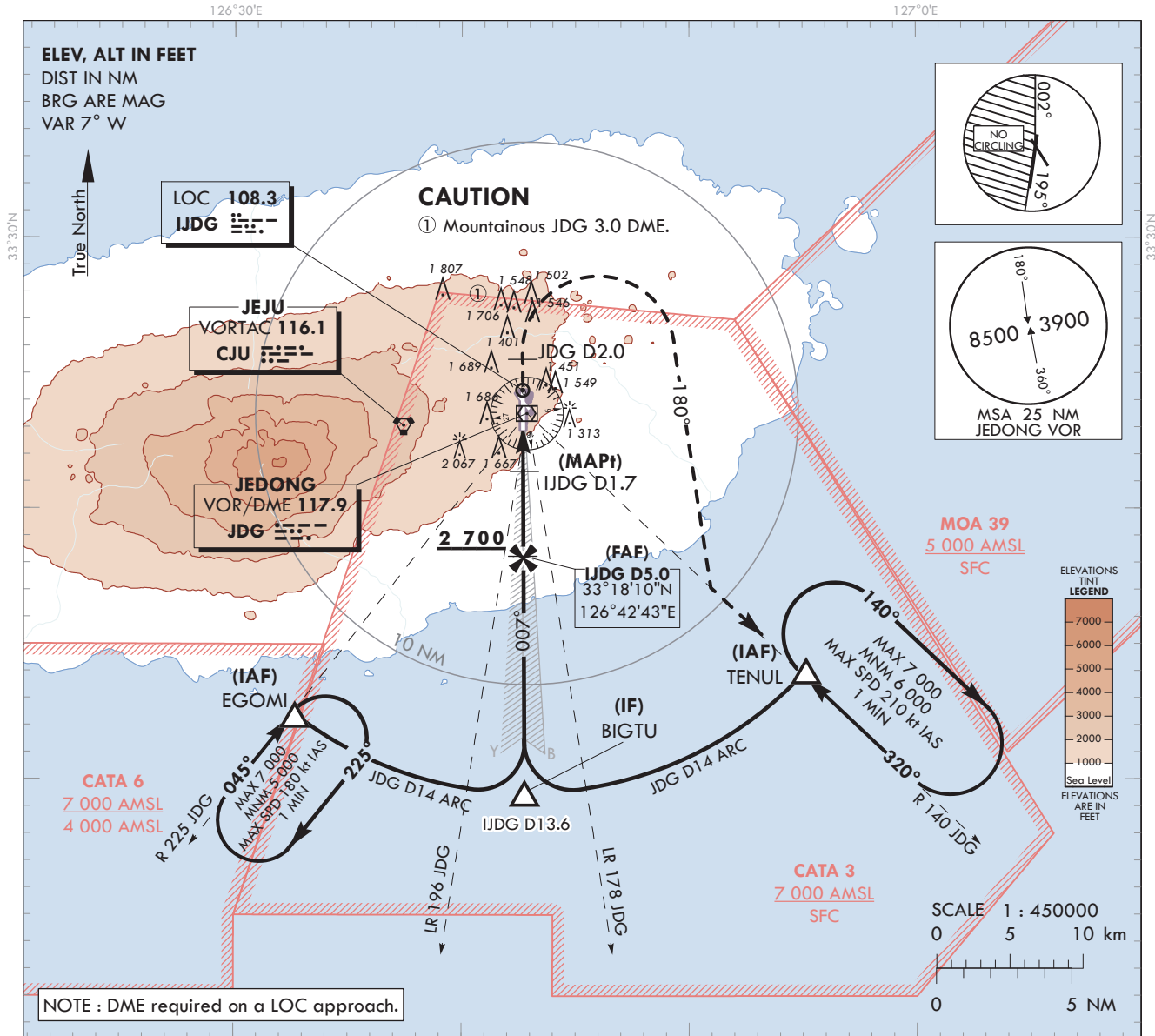
AERODROME ELEV 1 174 ft
HEIGHTS RELATED TO
THR RWY 01 - ELEV 1 102 ft

JEJU	APP	121.2
		124.05
JEONGSEOK	TWR	124.35

JEJU/Jeongseok(RKPD)

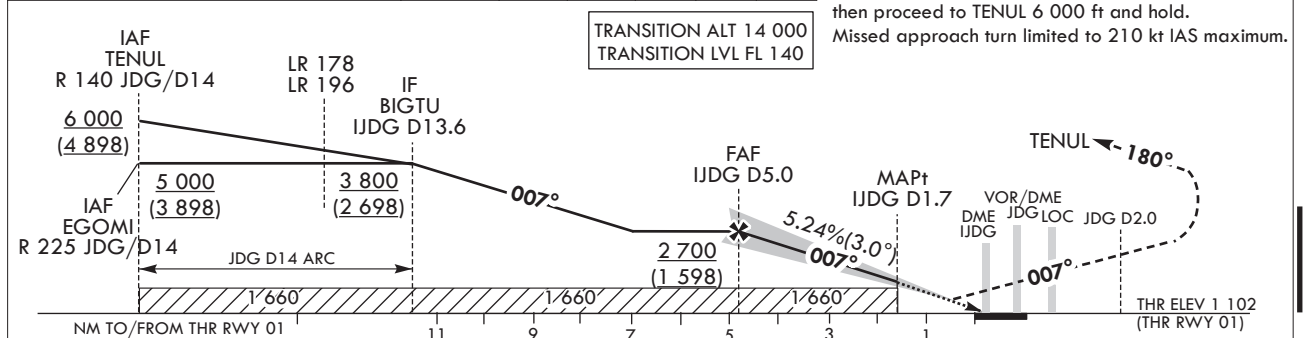
LOC RWY 01

Note : Approach under ICAO Flight Procedures.



RECOMMENDED PROFILE	DME IJGD	5	4	3	2	1.7
Final Approach Gradient 5.31%, 323 ft/NM	ALT(HGT)	2 700 (1 598)	2 393 (1 291)	2 070 (968)	1 747 (645)	1 660 (558)

MISSED APPROACH
Climb straight ahead until JGD D2.0, turn right HDG 180° to intercept R 140 JGD, then proceed to TENUL 6 000 ft and hold. Missed approach turn limited to 210 kt IAS maximum.



CATEGORY	MDA(H)	A				B				C				D			
		1 660				2 500 m				2 900 m				3 300 m			
LOC (4.0%)	FULL	1 660				2 500 m				2 900 m				3 300 m			
	ALS INOP	(558)				3 000 m				3 300 m							
LOC (2.5%)	FULL	1 720				2 900 m				3 300 m							
	ALS INOP	(618)				3 300 m											
	MAX IAS	100	135	180	205												
*Circling		1 920(746)		2 020(846)		3 500 m		3 800 m		4 600 m							

Rate of descent (FAF - THR)	knots	60	90	120	150	180
V/V fpm		315	473	630	788	945

Change : Information of instrument approach procedure for RWY 01(LOC RWY 01).

AERONAUTICAL DATA TABULATION

LOC approach to RWY 01 from TENUL, EGOMI		
Fix/point		Coordinates
TENUL(IAF)	R 140 JDG/14.00 NM	33°14'01.6"N 126°55'08.7"E
EGOMI(IAF)	R 225 JDG/14.00 NM	33°12'24.7"N 126°32'40.7"E
BIGTU(IF)	BRG 187.12°/13.60 NM IJDG	33°09'30.3"N 126°42'46.3"E
D5.0 IJDG (FAF)	BRG 187.12°/4.95 NM IJDG	33°18'10.2"N 126°42'43.3"E
D1.7 IJDG (MAPt)	BRG 187.12°/1.70 NM IJDG	33°21'25.6"N 126°42'42.2"E
THR RWY01		33°22'58.36"N 126°42'41.71"E
IJDG LOC		33°24'22.7"N 126°42'41.2"E
IJDG DME		33°23'07.8"N 126°42'46.5"E
D2.0 JDG(MATF)	2.00 NM JDG	33°25'31.7"N 126°42'40.8"E
TENUL(MAHF)	R 140 JDG/14.00 NM	33°14'01.6"N 126°55'08.7"E

**INSTRUMENT
APPROACH
CHART - ICAO**

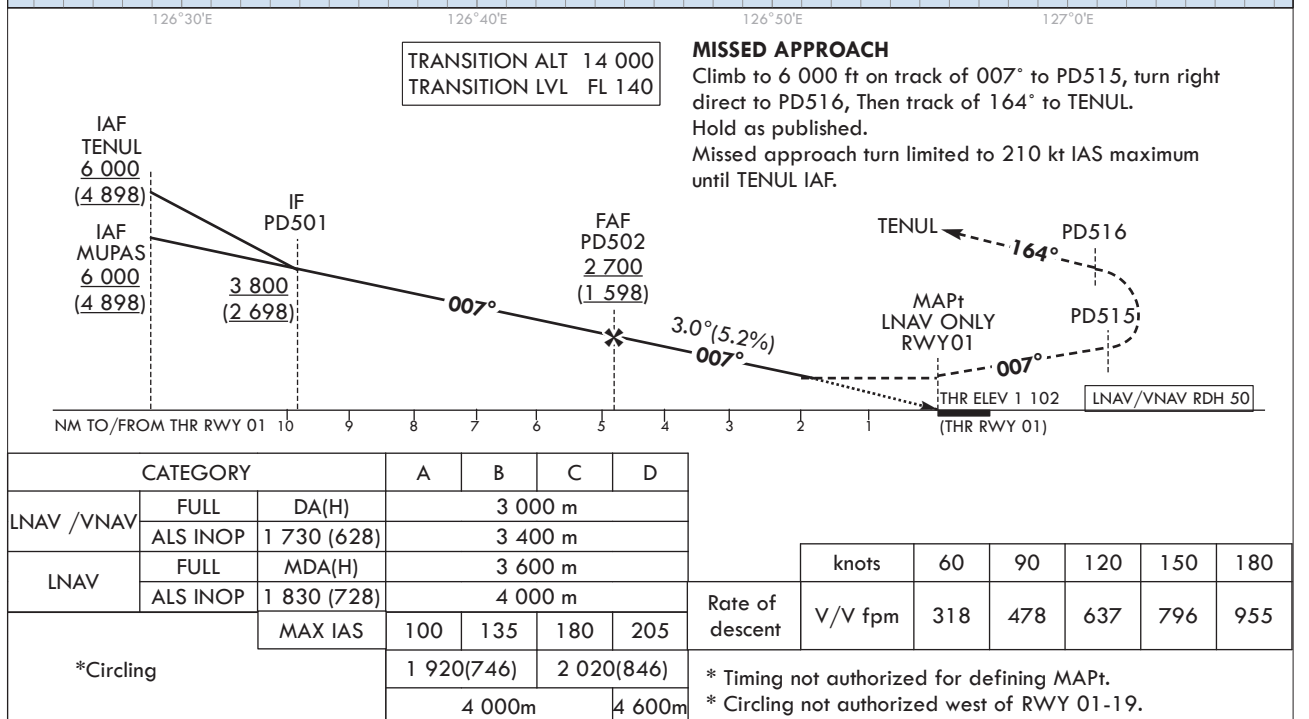
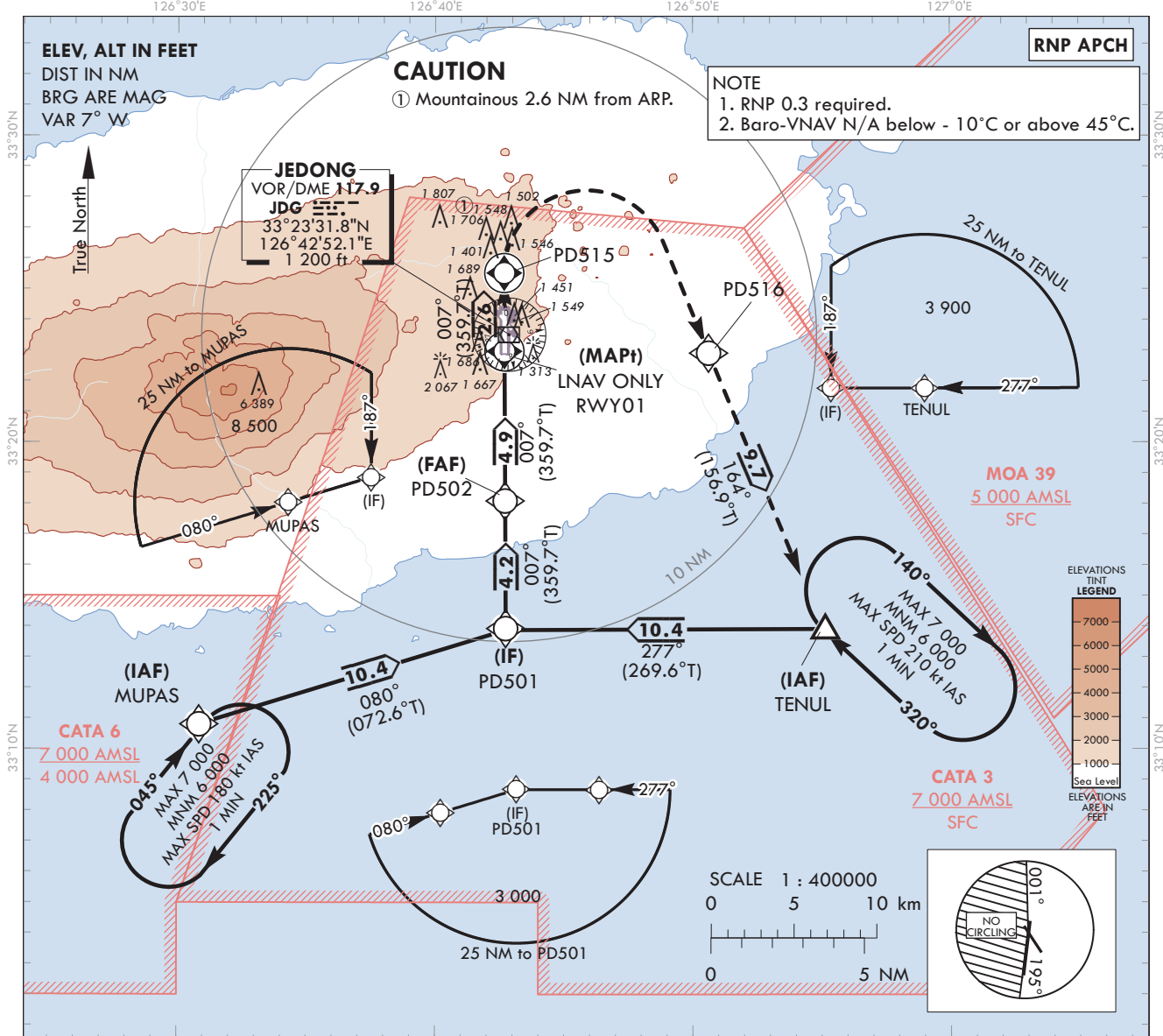
AERODROME ELEV 1 174 ft
HEIGHTS RELATED TO
THR RWY 01 - ELEV 1 102 ft

JEJU APP 121.2
124.05
JEONGSEOK TWR 124.35

JEJU/Jeongseok(RKPD)

Note : Approach under ICAO Flight Procedures.

RNP RWY 01



Change : Amended phrase(227° → 277°).

AERONAUTICAL DATA TABULATION

Instrument Approach Procedure Coding Tables

RNP RWY01 - via TENUL to PD501(IF)

Serial Number	Path Descriptor	Waypoint Identifier	Fly-over	Course/Track M(T)	Distance (NM)	Turn direction	Altitude (ft)	Speed (kt)	Coordinates	VPA/RDH	Navigation specification	Remarks
001	IF	TENUL	-	-	-	-	+6 000	-	33°14'01.6"N 126°55'08.7"E	-	RNP APCH	IAF
002	TF	PD501	-	277(269.6)	10.4	-	+3 800	-	33°13'56.3"N 126°42'44.8"E	-	RNP APCH	IF

RNP RWY01 - via MUPAS to PD501(IF)

Serial Number	Path Descriptor	Waypoint Identifier	Fly-over	Course/Track M(T)	Distance (NM)	Turn direction	Altitude (ft)	Speed (kt)	Coordinates	VPA/RDH	Navigation specification	Remarks
001	IF	MUPAS	-	-	-	-	+6 000	-	33°10'49.1"N 126°30'51.5"E	-	RNP APCH	IAF
002	TF	PD501	-	080(072.6)	10.4	-	+3 800	-	33°13'56.3"N 126°42'44.8"E	-	RNP APCH	IF

RNP RWY01 - via PD501(IF) to MAHF

Serial Number	Path Descriptor	Waypoint Identifier	Fly-over	Course/Track M(T)	Distance (NM)	Turn direction	Altitude (ft)	Speed (kt)	Coordinates	VPA/RDH	Navigation specification	Remarks
002	TF	PD501	-	-	-	-	+3 800	-	33°13'56.3"N 126°42'44.8"E	-	RNP APCH	IF
003	TF	PD502	-	007(359.7)	4.2	-	+2 700	-	33°18'06.1"N 126°42'43.4"E	-	RNP APCH	FAF
004	TF	RWY01	Y	007(359.7)	4.9	-	+1 830	-	33°22'58.4"N 126°42'41.7"E	3.00/50	RNP APCH	MAPt
005	TF	PD515	Y	007(359.7)	2.6	-	-	-210	33°25'31.7"N 126°42'40.8"E	-	RNP APCH	-
006	DF	PD516	-	-	-	R	-	-210	33°22'55.2"N 126°50'37.5"E	-	RNP APCH	-
007	TF	TENUL	Y	164(156.9)	9.7	-	-	-210	33°14'01.6"N 126°55'08.7"E	-	RNP APCH	-
008	HM	TENUL	Y	320(312.7)	-	R	-7 000 +6 000	-210	33°14'01.6"N 126°55'08.7"E	-	RNP APCH	Outbound time 1min

Change : Amended phrase(VPA/TCH → VPA/RDH).

**INSTRUMENT
APPROACH
CHART - ICAO**

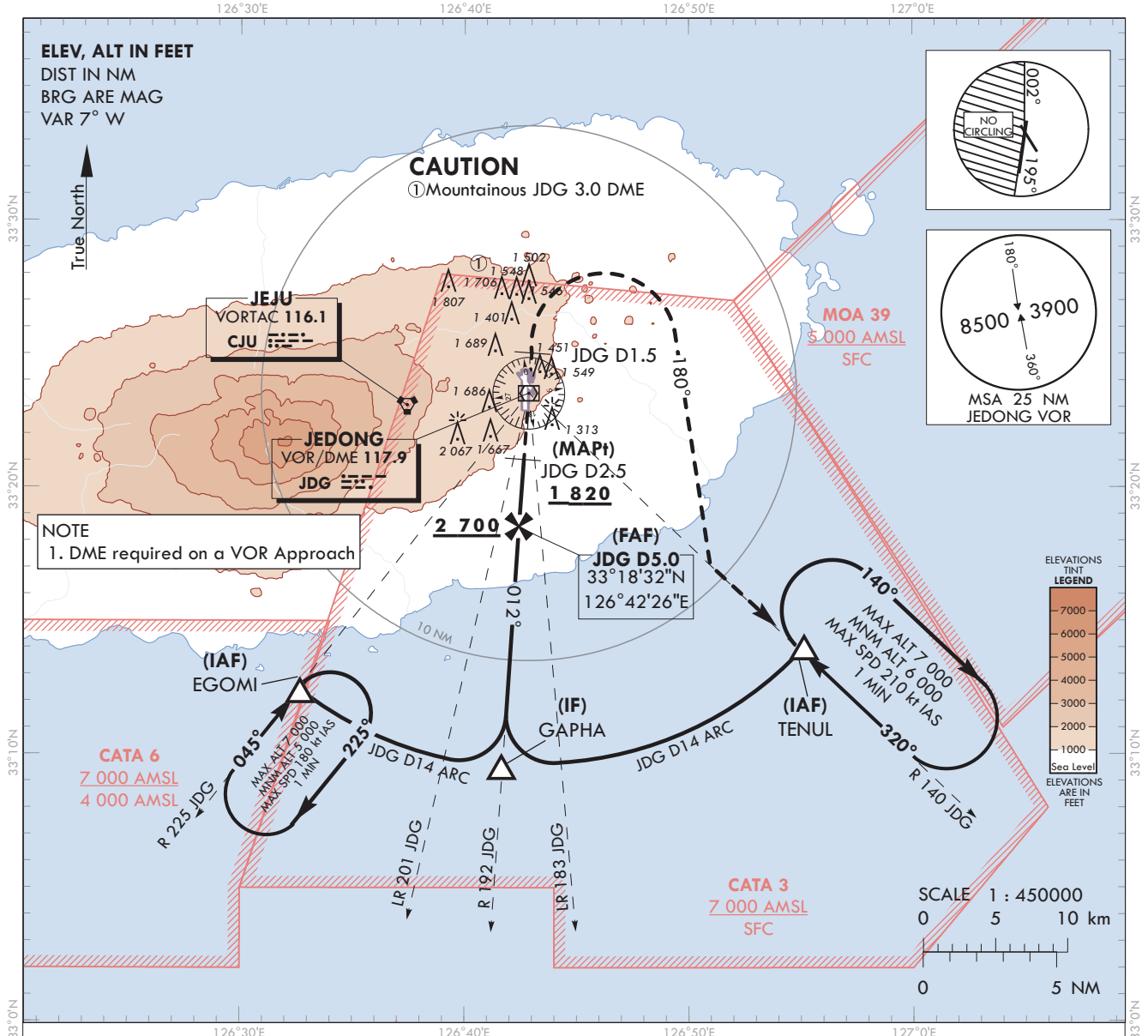
AERODROME ELEV 1 174 ft
HEIGHTS RELATED TO
THR RWY 01 - ELEV 1 102 ft

JEJU APP 121.2
124.05
JEONGSEOK TWR 124.35

JEJU/Jeongseok(RKPD)

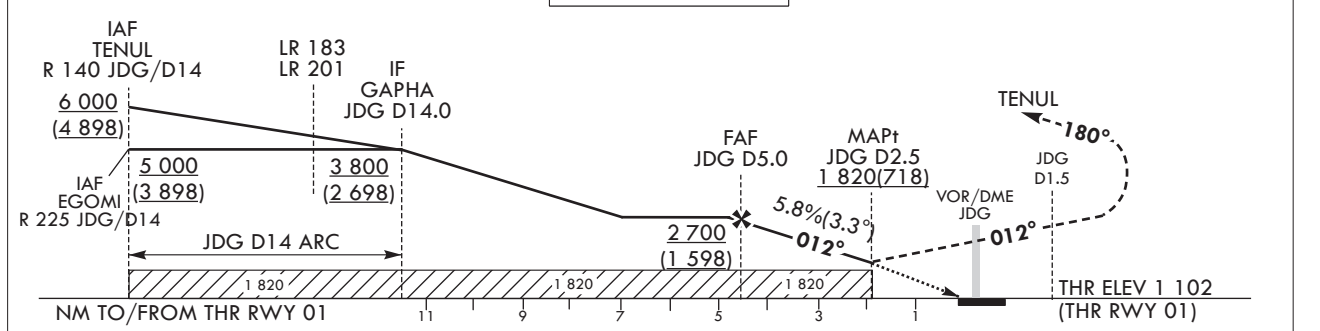
VOR RWY 01

Note : Approach under ICAO Flight Procedures.



RECOMMENDED PROFILE	DME JDG	5	4	3	2.5	MISSED APPROACH
Final Approach Gradient 5.76%, 350 ft/NM	ALT(HGT)	2 700 (1 598)	2 350 (1 248)	2 000 (898)	1 820 (718)	Climb straight ahead until JDG D1.5, turn right HDG 180° to intercept R 140 JDG, then proceed to TENUL 6 000 ft and hold. Missed approach turn limited to 210 kt IAS maximum.

TRANSITION ALT 14 000
TRANSITION LVL FL 140



CATEGORY	MDA(MDH)	A	B	C	D	Rate of descent (FAF - THR)	
VOR	FULL	1 820	3 200 m			knots	60 90 120 150 180
	ALS INOP	(718)	3 600 m				
	MAX IAS	100	135	180	205	V/V fpm	352 528 704 880 1 056
*Circling		1 920(746)		2 020(846)		* Timing Not authorized for defining MAPt * Circling Not authorized west of RWY 01-19.	
		3 600 m		3 800 m	4 600 m		

AERONAUTICAL DATA TABULATION

VOR approach to RWY 01 from TENUL, EGOMI		
Fix/point		Coordinates
TENUL (IAF)	R 140 JDG/14.00 NM	33°14'01.6"N 126°55'08.7"E
EGOMI (IAF)	R 225 JDG/14.00 NM	33°12'24.7"N 126°32'40.7"E
GAPHA(IF)	BRG 191.58°/14.00 NM JDG	33°09'32.5"N 126°41'39.1"E
D5.0 JDG (FAF)	BRG 191.58°/5.00 NM JDG	33°18'32.0"N 126°42'26.0"E
D2.5 JDG (MAPT)	BRG 191.58°/2.50 NM JDG	33°21'01.9"N 126°42'39.0"E
THR RWY01	Final approach descent angle 3.30°	33°22'58.36"N 126°42'41.71"E
JDG VOR/DME		33°23'31.8"N 126°42'52.1"E
D1.5 JDG (MATF)	1.50 NM JDG	33°25'01.7"N 126°42'59.9"E
TENUL (MAHF)	R 140 JDG/14.00 NM	33°14'01.6"N 126°55'08.7"E